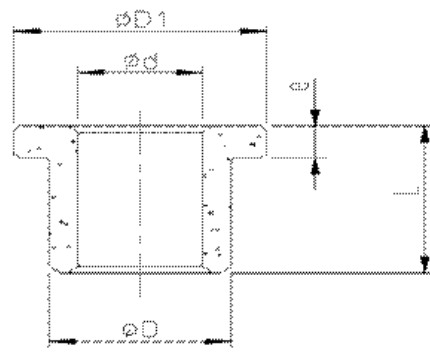


AM, AI, AW



AL, AJ (with flange)

Material Chemical Component	Cu 54-56% Sn 4-6% Fe 39-41%							
Physical and Mechanical Performance	Oil content (%)	$\geq 18\%$	Oil density (g/cm ³)	6.2-6.8	Crushing strength (N/mm ²)	>150	Surface hardness (HB)	25-55
HMEC Type no.	Dimension							
	d		D		L		D1	e
AL 202615	20	+0.038 +0.007	26	+0.066 +0.035	15	± 0.135	32	3
AL 202620	20	+0.038 +0.007	26	+0.066 +0.035	20	± 0.165	32	3
AL 202625	20	+0.038 +0.007	26	+0.066 +0.035	25	± 0.165	32	3
AL 202630	20	+0.038 +0.007	26	+0.066 +0.035	30	± 0.165	32	3
AL 222830	22	+0.038 +0.007	28	+0.066 +0.035	30	± 0.165	34	3
AL 253220	25	+0.038 +0.007	32	+0.078 +0.043	20	± 0.165	39	3.5
AL 303820	30	+0.038 +0.007	38	+0.078 +0.043	20	± 0.165	46	4
AL 303830	30	+0.038 +0.007	38	+0.078 +0.043	30	± 0.165	46	4
AL 324030	32	+0.038 +0.007	40	+0.078 +0.043	30	± 0.165	48	4
AL 354525	35	+0.044 +0.009	45	+0.068 +0.013	25		55	5
AL 354540	35	+0.044 +0.009	45	+0.068 +0.013	40		55	5
AL 405025	40	+0.044 +0.009	50	+0.068 +0.013	25		60	5
AL 405050	40	+0.044 +0.009	50	+0.068 +0.013	50		60	5
AL 202416	20	+0.038 +0.007	24	+0.066 +0.035	16	± 0.135	30	3
AL 253020	25	+0.038 +0.007	30	+0.066 +0.035	20	± 0.165	39	3.5
AL 253025	25	+0.038 +0.007	30	+0.066 +0.035	25	± 0.165	39	3.5
AL 253032	25	+0.038 +0.007	30	+0.066 +0.035	32	± 0.165	39	3.5
AL 081212	8	+0.025 +0.000	12	+0.056 +0.028	12	± 0.135	16	2
AL 081216	8	+0.025 +0.000	12	+0.056 +0.028	16	± 0.165	16	2
AL 081206	8	+0.025 +0.000	12	+0.056 +0.028	6	± 0.09	16	2
AL 081208	8	+0.025 +0.000	12	+0.056 +0.028	8	± 0.11	16	2
AL 101610	10	+0.025 +0.000	16	+0.056 +0.028	10	± 0.11	22	3
AL 101616	10	+0.025 +0.000	16	+0.056 +0.028	16	± 0.165	22	3
AL 121812	12	+0.034 +0.006	18	+0.056 +0.028	12	± 0.135	24	3